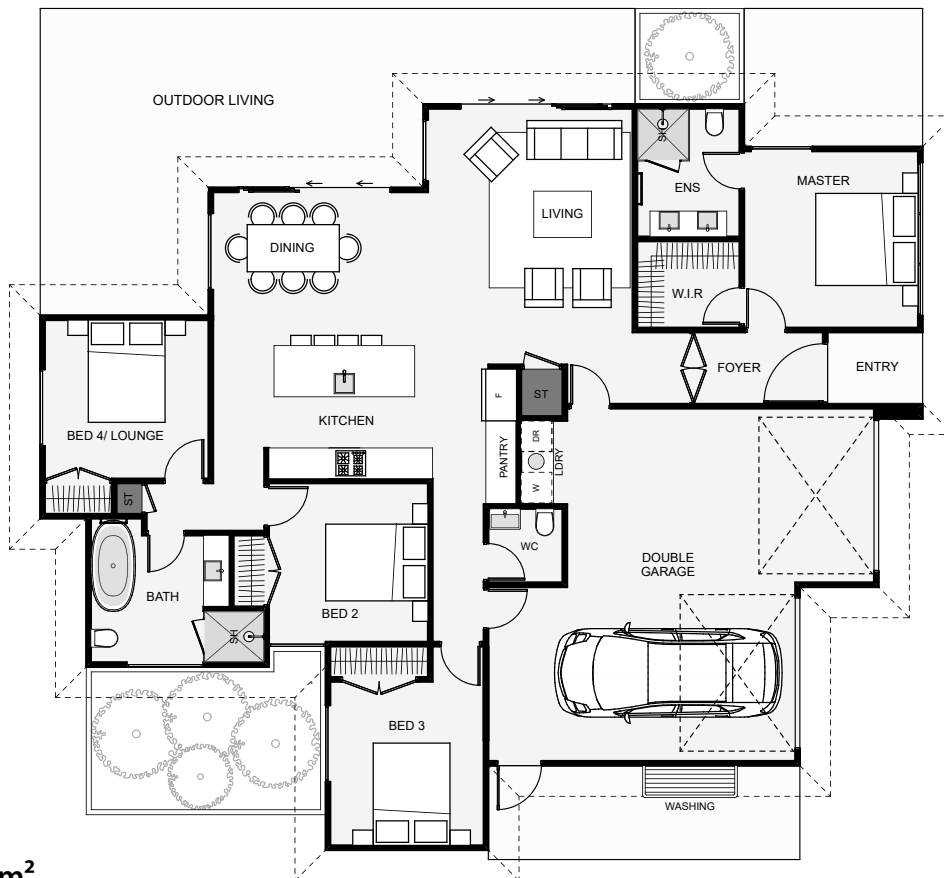




Adaptable in design, this home lets you go from four bedrooms to three with dual living. This is simply done by swapping out the fourth bedroom. Other features include a separate guest toilet, an extra pantry space, good size bathrooms and great outdoor living with an option for overhead cover. Wanting a four bedroom home now, but want the option for an extra lounge later, this could be your answer!



Floor Area: 177m²

2
 4
 2
 1
 17.3m 14.6m

Contact us:

Ph: 0800 438 117

E: homes@mitchellbuilders.nz

www.mitchellbuilders.co.nz

